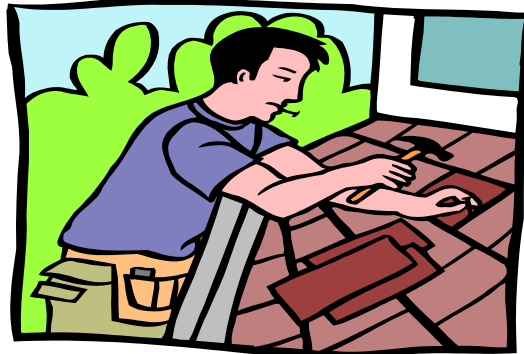


Issue 5  
Spring 2014

## *the Christie Chronicle*



Winter has been a special season on Beech Mountain, but we've got a serious case of Spring Fever! March 20<sup>th</sup> is officially the First Day of Spring. According to Rays Weather (our official source), Beech Mountain had a total of 65.2 inches of ice and/or snow, with the first snowfall on Oct 25<sup>th</sup>, 2013. We had some snowfall almost every week, with our largest snowfall- 10"- coming on Feb 13<sup>th</sup>, 2014. It's been a long wait for the thaw, but it's finally here. That means the new Christie Village roof will be going on soon!



Thanks to the owners assessment fee, and the collection efforts of our Board, especially our Treasurer, Barbara Freeman, Collections Extraordinaire, and our collection volunteers- The Jan/Ann/Dan Team- we've collected thousands of dollars in past due maintenance fees which will be used for the new roof and to begin other repairs of our building- weather willing and if funds permit.

When doing collections, we really cleaned up our database. We found that many names still in the account data base were deceased, and that some owners had filed quit claims years ago but were still receiving annual bills and some of those quit claims were never recorded. We have re-filed and taken care of those deeds, returning many prime weeks to our inventory. If any owner is interested in swapping your existing week for another week, or if you would like an additional week, we have some peak dates available. Email [infor@christievillage.com](mailto:infor@christievillage.com) or call 828-387-2100 to discuss.

Thank You to all the owners who have paid their 2014 dues, which were due by Dec 31<sup>st</sup>, and are now past due. If you haven't paid yet, please do so soon. If you are having trouble paying your dues, or feel you can't continue your ownership, please talk to us! We appreciate every owner and are willing to work with you in a confidential manner- we may have a solution for you! Call us at 828-387-2100.

## **TIMESHARE INDUSTRY NEWS**

### **DAE:**

Our exchange partner, DAE is offering a 20% off special for Christie Village owners! If you haven't joined yet, sign up at [www.daelive.com](http://www.daelive.com) DAE offers a free membership, as well as a Gold Advantage membership. Check their website for details. After you join, be sure and sign up to receive newsletters- they are full of good information and have many specials available to you as a Christie Village timeshare owner.

### Christie Village Owners

*The DAE Difference:*

- No annual membership fees required
- Exchange fee of just \$135
- Award-winning customer services
- Get a three-year credit for each week you bank with us
- Pay no fees until your exchange is confirmed
- Low-cost rental vacation weeks at timeshare AND non-timeshare resorts
- Last-minute Bonus Weeks starting at just \$199

Bank your week  
with DAE and get  
**20% off**  
your next exchange fee!

*Note: Week must be at least 8 weeks from check-in date.*

**1-877-516-7610**  
[www.daelive.com](http://www.daelive.com) | [infousa@daelive.com](mailto:infousa@daelive.com)



### **Redweek.com**

Timeshare owners post their units for rent or sale to an audience of over 1.5 million registered users, or exchange it using Dial An Exchange (DAE) via this website. You can rent or buy timeshare units directly from the owner, usually with huge savings. It's FREE to view the destinations and availability. If you'd like to join, the membership fee of only \$14.99 allows you to contact owners about available units, access thousands of resort reviews, and view want ads. Posting your own timeshare for rent, sale, or exchange requires a nominal additional fee. Check out the website [www.redweek.com](http://www.redweek.com) to join and for more details.

## **The Timeshare User's Group (TUG)**

This site has lots of information on timeshares. You'll find ratings & reviews, online forums, classified ads for timeshare rentals and sales, and an advice section. There is a Direct Exchange section where you can exchange your unit/week for free. You must be a member of TUG to make exchanges, and you must be current in your Christie Village annual dues. A one year TUG membership costs \$15.00. The website is: <http://tug2.com/JoinTUG/default.aspx>

## **Timeshare Advisor**

TimeshareAdvisor is a free, comprehensive website for consumers and the Resort Industry that allows you to explore more than 5,000 timeshare resorts throughout the world. You can view resort pictures, and get tips and helpful information from other timeshare enthusiasts and resort managers. Learn how to make the most of your timeshare experience. Type in or click on: <http://timeshareadvisor.com/>

## **THINGS TO DO**

### **LET'S GO FISHING!**

Fishing on Beech Mountain and the surrounding area is a great way to spend some quality time, and you might catch some fish for dinner! You can cook your catch on the gas grill located behind the Christie Village office. We purchased it for the use of Christie Village owners, and hope you will enjoy using it.

One of our long-term owners, Brant Smith, drives up from Columbia, SC specifically to fish, usually in the month of June. Beech Mountain has two beautiful lakes- Buckeye and Coffee Lake, and Brant fishes both for trout. For bait, he uses night crawlers and corn and trout paste made by Berkley. Brant has his secret fishing hole, but he won't tell us where exactly!

While Buckeye Lake offers fishing year round, the fishing season officially begins the first Saturday in April, and runs through the end of February. Fishing licenses are required for anyone over the age of 16. Purchase them as well as equipment and bait on Beech Mountain at Fred's General Mercantile Store.

Buckeye Lake is the centerpiece of the town's recreational facilities. The area includes a softball field, playground for the kids, and is the trail head for several of Beech Mountain's hiking and biking trails. In June a popular event for kids and family is the Kiddo Fishing Derby, a free event for children ages 4-12.

Coffee Lake has a scenic 1/8-mile course which wraps around the lake and is perfect for both walking and jogging. Brant reports they have built a nice fishing dock as well as a walking track around the lake. A parking area is available with direct access to the trail. For more information, including directions, contact the Beech Mountain Town Hall (828-387-4236) or the Beech Mountain Chamber of Commerce (828-387-9283).

## **Let's Get Outside and take a Day Trip on the Quilt Trail:**



As you travel along the back roads around the Beech Mountain area, you'll see oversized painted quilt blocks hanging on the sides of barns and other outbuildings.

You're on the Appalachian Quilt Trail, which started in Ohio and is now part of the landscape in Western North Carolina, Tennessee and Kentucky. The Watauga Barn Quilts began in 2007, a project of Handmade in America. The Watauga Trail links the Quilt Trails in Ashe, Avery, Madison, Mitchell and Yancey Counties, and links the mountain communities to the traditions of their rich Appalachian heritage. Many of the quilts were painted by families, while others were painted by community groups, volunteers and school children. Look for such designs as Sunflower Variation, Square within a Square and the Le Moyne Star.

One of our favorite designs is on a building right in town on Beech Mountain- have you seen it? Hint-Look above a real estate sign. For more info, see these links:

<http://www.quilttrailswnc.org/>

<http://www.watauga-arts.org/pages/barn.html>

### **Beech Mountain Spring Happenings:**

Saturday, April 19<sup>th</sup>: Easter Egg Hunt, Buckeye Rec Center

Sunday, April 20<sup>th</sup>: Easter Sunday- please worship at your church of choice

Thursday, May 1<sup>st</sup>: Beech Mountain Town Birthday Party

Saturday, May 17<sup>th</sup>: Beech Mountain Metric Bike Race

Always check <http://beechmtn.com/events2> for the most up to date events!

### **ONE LAST THING!**

Please save the date **Saturday, September 20<sup>th</sup>** for our annual Owners Meeting which will be held onsite at Christie Village. More details will be provided in the Summer Chronicle issue. Please plan to join us for this important, fun event!